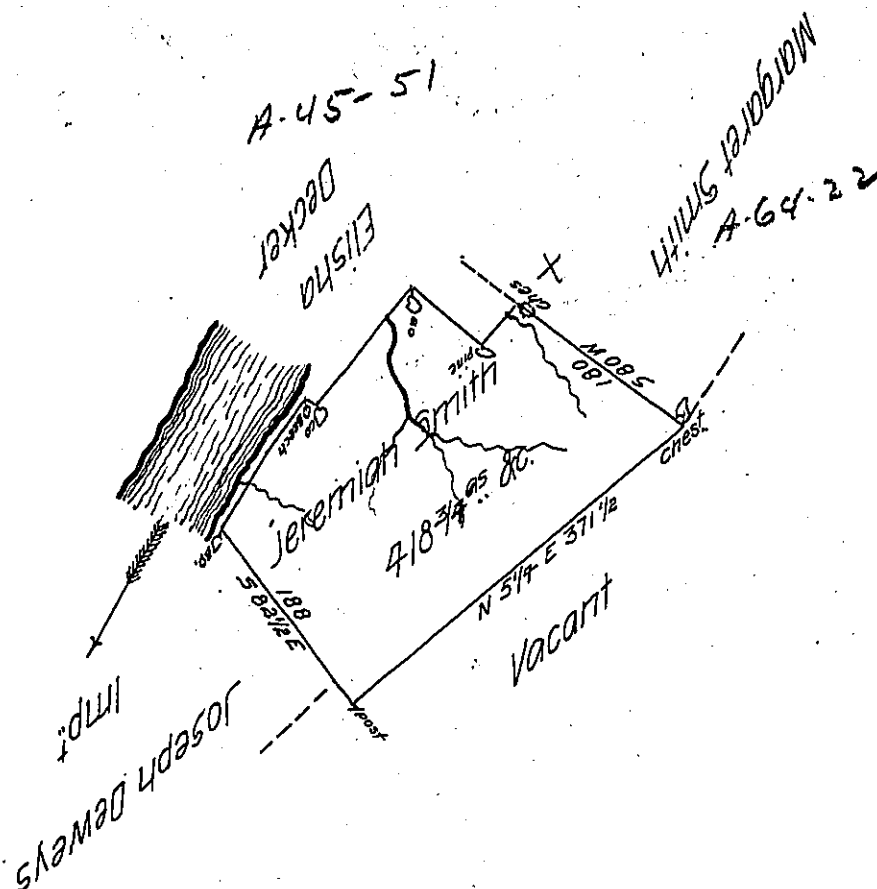


Course & distance from the chest to the B.O.K.

- ✓ 5 6 1/2 E 45 to a pine
- ✓ 5 83 W 80 to a B.O.K.
- ✓ 5 6 1/2 E 129 to C.O.K.
- ✓ 5 68 W 5 to Beech on the bank of the river
- ✓ 5 6 1/2 E 56 1/2 ~~to the B.O.K.~~
- ✓ 5 11 1/2 E 73 to the B.O.K.



A draft of a tract of land called — situate on the east of the east branch of Susqu^a. River in the County of Luzerne containing four hundred and eighteen acres and allowance surveyed for Jeremiah Smith the 29th day of June 1793 in pursuance of a warrant dated the 15th day of Jan^y. 1793.

Daniel Brodhead Esq.
 Surv^r. Genl.

By W^m. Gray D.S.

IN TESTIMONY that the above is a copy of the original remaining on file in the Department of Internal Affairs of Pennsylvania, made conformably to an Act of Assembly approved the 16th day of February, 1833, I have hereunto set my Hand and caused the Seal of said Department to be affixed at Harrisburg, this nineteenth day of November 1906

Isaac R. Brown
 Secretary of Internal Affairs.